

Soprano / Tenor SKYLARK

WORDS BY JOHNNY MERCER

MUSIC BY HOAGY CARMICHAEL

MODERATELY

E \flat MAJ7

F7

Fm7

B \flat 7



START

E \flat 6
E \flat MAJ7

B \flat 7/F
Fm7

E \flat /G
E \flat MAJ7

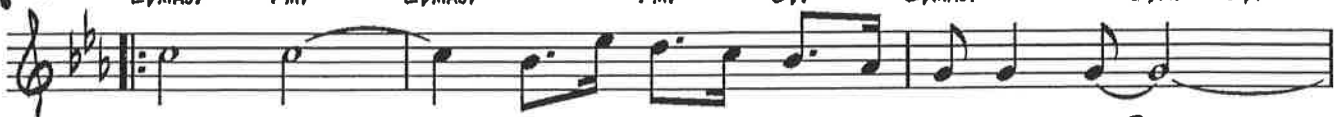
A \flat
Fm7

B \flat 7

E \flat /B \flat
E \flat MAJ7

Gm/B \flat
B \flat m7

E \flat 7



SKY - LARK, _____ HAVE YOU AN - Y-THING TO SAY TO ME? _____

A \flat
A \flat MAJ7

E \flat /G
Gm7

C7(#9)

A \flat
F7

E \flat /G



_____ WON'T YOU TELL ME WHERE MY LOVE CAN BE? _____

F7
Fm7

B \flat 7
B \flat 7

E \flat
E \flat MAJ7

Cm
Cm7

Cm7/B \flat



_____ IS THERE A MEAD-OW IN THE MIST _____ WHERE SOME-ONE'S

A \flat
Fm7

Fm7/B \flat
B \flat 7

B \flat 7

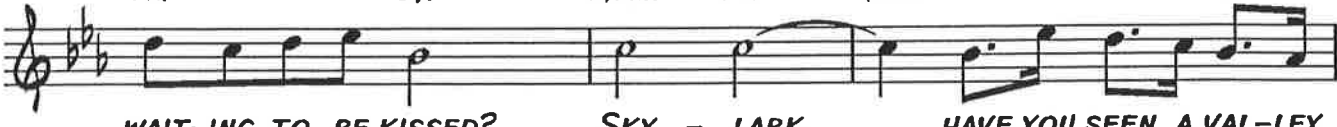
E \flat 6
E \flat MAJ7

B \flat 7/F
Fm7

E \flat /G
E \flat MAJ7

A \flat
Fm7

B \flat 7



WAIT-ING TO BE KISSED? SKY - LARK, _____ HAVE YOU SEEN A VAL-LEY

E \flat /B \flat
E \flat MAJ7

Gm/B \flat
B \flat m7

E \flat 7

A \flat
A \flat MAJ7

E \flat /G
Gm7

C7(#9)

F7

E \flat /G



GREEN WITH SPRING, _____ WHERE MY HEART CAN GO A-JOUR-NEY - ING _____

F7
Fm7

B \flat 7
B \flat 7

E \flat
E \flat MAJ7

B \flat 7
A \flat 7



_____ O-VER THE SHAD-OWS AND THE RAIN, TO A BLOSS-OM-COV-ERED

Eb EbMAJ7 Bbm7 Eb7 Ab AbMAJ9 Ab6 E7 Eb7
 LANE? _____ AND IN YOUR LONE - LY FLIGHT, _____

Bbm7 Eb7 AbMAJ7 Eb°7 Ab6 Db7 C7
 _____ HAVE-N'T YOU HEARD THE MUS - IC IN THE NIGHT? _____

GM7(b5) D°7 C7/E FM FM7 F°7 Db/F
 _____ WON-DER-FUL MUS - IC, _____ FAINT AS A "WILL-O'-THE-WISP," _____

FM Eb7 Ab G EbMAJ7 FM7
 CRAZ - Y AS A LOON, SAD AS A GYP - SY SER - EN -

A7 D7 G Bb7/F Eb6 Bb7/F Eb/G Ab
 A7 D7 GMAJ7 Bb7 EbMAJ7 FM7 EbMAJ7 FM7 Bb7
 AD-ING THE MOON. (Oh.) SKY - LARK, _____ I DON'T KNOW IF YOU CAN

Eb/Bb GM/Bb Ab Eb/G C7(#9)
 EbMAJ7 Bbm7 Eb7 AbMAJ7 GM7
 FIND THESE THINGS, _____ BUT MY HEART IS RID - ING

Ab Eb/G F7 Bb7 Bb7
 F7 FM7
 ON YOUR WINGS, _____ SO, IF YOU SEE THEM AN - Y -

Eb Bb7(#9) Bb7 1. Eb B9 Bb9 2. Eb E6 Eb6
 EbMAJ7 B7 Bb7 EbMAJ7 FM7 Bb7 EbMAJ7
 WHERE, WON'T YOU LEAD ME THERE? THERE?

END